



Brush Seal Installation Guide



Tools Required:

- 1) Screw gun / Drill
- 2) 1/4" hex-head driver bit for screwing in fasteners
- 3) 1/8" drill bit for pre-drilling holes in Aluminum Holders
- 4) Hack saw or chop-saw for cutting down Aluminum Holders (if req)
- 5) Bolt cutter for cutting down brush (if req)

Step 1: Measure the overall length required and cut down the brush and aluminum holder as needed.

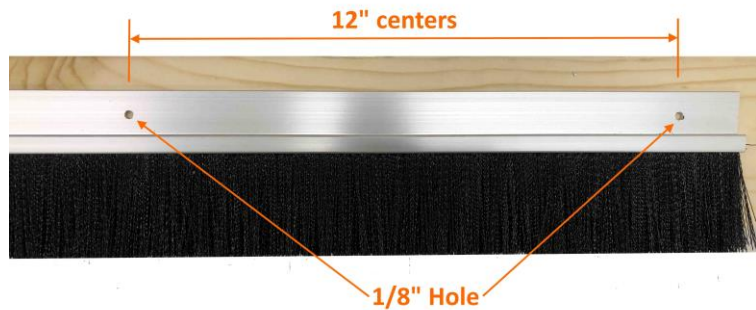
Step 2: To cut down the assembly, separate the brush from the aluminum holder by sliding the brush out of the holder.



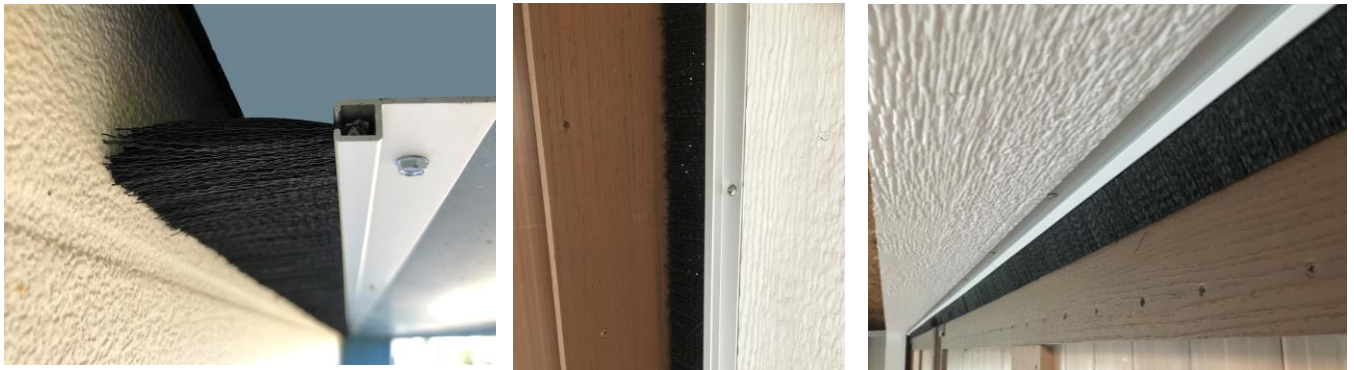
Step 3: Cut the aluminum holder with a hack saw and the brush with a bolt cutter to the desired length. Once cut insert brush back into the aluminum holder.



Step 4: Pre-drill 1/8" holes in aluminum holder at 12" centers. 9 holes per 8ft holder.



Step 5: Mount assembly to surface using the fasteners provided. Fasteners are intended for light gauge sheet metal only. For heavy gauge steel pre-drill the hole using a 5/64" drill bit. If your fastening to wood a wood fastener would work best.



Thanks for your business!